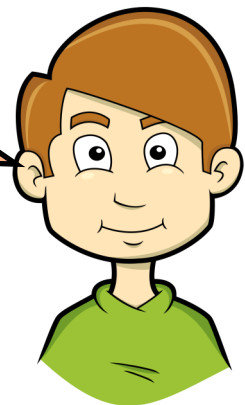




Your historical challenge over the next few weeks is to research an English castle of your choice, focusing on the features and story behind that castle.

To present your research you could:

- Create a poster on the computer or by hand
- Create a 3D model of the castle including labels
- Sketch and label a picture of the castle



Top Tips

- Remember to be as creative as possible
- You can use a variety of materials and mediums to create your research but it needs to be exciting, colourful, engaging and enjoyable.
- Aim for 5 star quality.

Please send your home learning in by :
Monday 20th October 2025

We can't wait to see what you have all been up to and to share one another's amazing work. We will be sharing each others work in the last week of our project.